



Mendocino County Children's Health Profile

Medical Director Forum
May 21st, 2021



About this Profile

- As health care professionals, we know social and economic factors dramatically impact health. In this Report, we focus on the health and social well-being of children in our local communities. Data is displayed from Partnership HealthPlan, ChildrenNow reports and Robert Wood Johnson (RWJ) County Health Ranking to create an overall profile of the health of our children.

Partnership HealthPlan Data

(for PHC members only):

- Enrollment and ethnicity by county
- 2020 QIP outcomes by county and ethnicity
- Blood lead screening by county & PCP site
- Behavioral health use rates
- ACEs Screenings by county
- Developmental Screenings by county

ChildrenNow & RWJ County Health Rankings

(for all children in the county):

- Perinatal health factors
- Income, poverty and food security
- Well child health metrics
- Elementary and high school outcomes
- Student mental health factors

Partnership HealthPlan

Mendocino County Children's Demographics



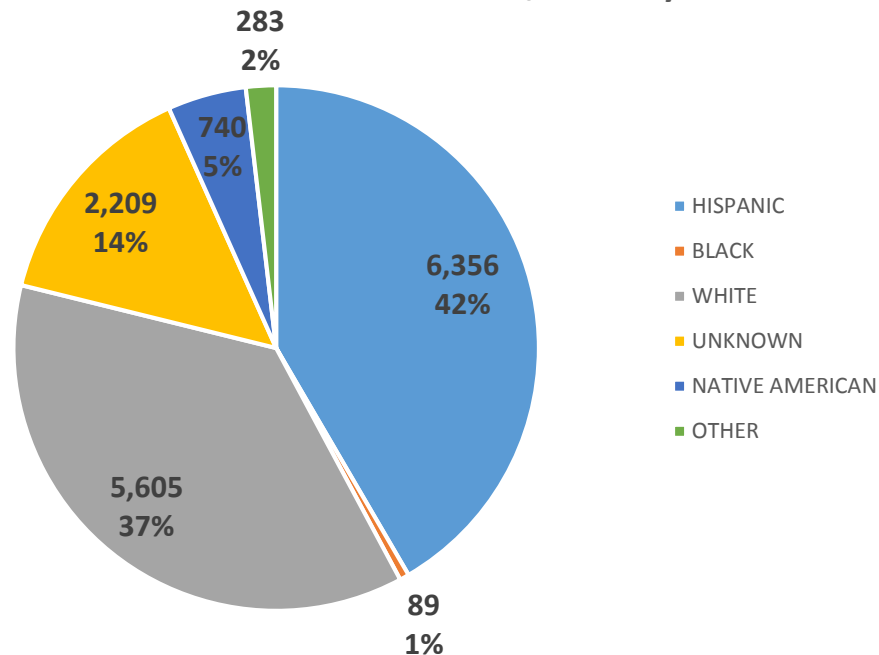
Total Members (April 2021)

0 - 20	15,282	40.50%
21 - 64	19,042	50.50%
65+	3,370	9%
Total	37,694	100%

Highlights

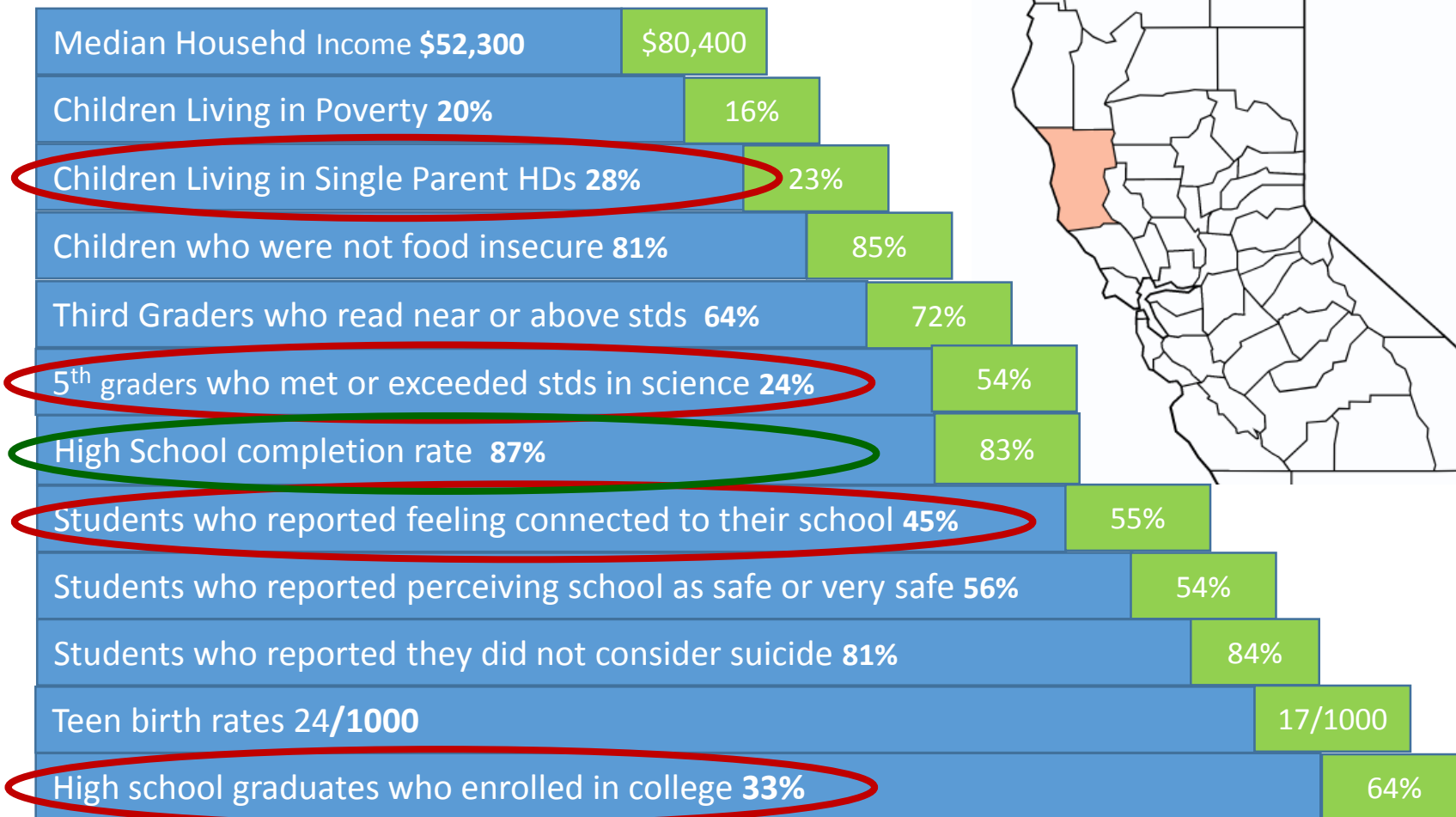
- 15,282 members under age 21 (40.5%)
- 42% of children Hispanic
- 37% White
- 5% Native American
- 1% Black
- 431 (2.8%) enrolled in CCS

Children Race/Ethnicity



Mendocino County Social & Economic Factors Matter

County Data State Average



Data Source: ChildrenNow & RWJ County Health Ranking

Eureka | Fairfield | Redding | Santa Rosa

Where is my County doing well or can improve?

Highlights

- 70% of women receive timely prenatal care
- 72% of newborns exclusively breastfed in hospital
- 95% of births not low birthwt.
- ~ 2 in 10 adolescents vaccinated for HPV



Newborns exclusively breastfed **72%** (70%)

Prenatal care in 1st trimester **70%** (84%)

Newborns not low birthwt **95%** (93%)

Kindergarteners up-to-date on immz. **85%** (95%)

Students who met 4 of 6 fitness stds **58%** (70%)

13 yo vaccinated for HPV **21%** (28%)

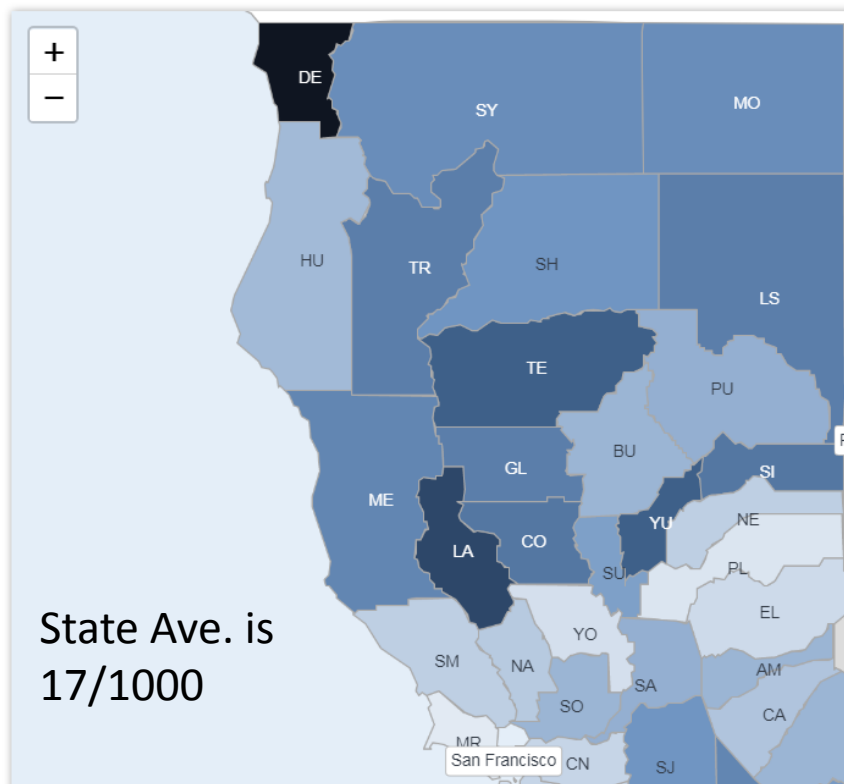
Children on Medi-Cal with annual preventative exam **48%** (41%)

Let's look at teen births in our community

Number of births per 1,000 female population ages 15-19.

The 2021 County Health Rankings used data from 2013-2019 for this measure.

Map | [Data](#) | [Description](#) | [Data Source](#) | [Strategies](#)



Mendocino County Teen Births by Ethnicity (2013-2019)

	Value	Error Margin
Teen Birth Rate	24	22-26
American Indian & Alaska Native	51	38-66
Hispanic	32	27-36
White	16	13-19

Highlights

- Mendocino County teen birth rate of 24/1000 is higher than the State average of 17/1000
- Looking at births by ethnicity, American Indian & Alaska Native women more than double the County average
- New annual adolescent well visits are an opportunity to address teen birth preventative measures.

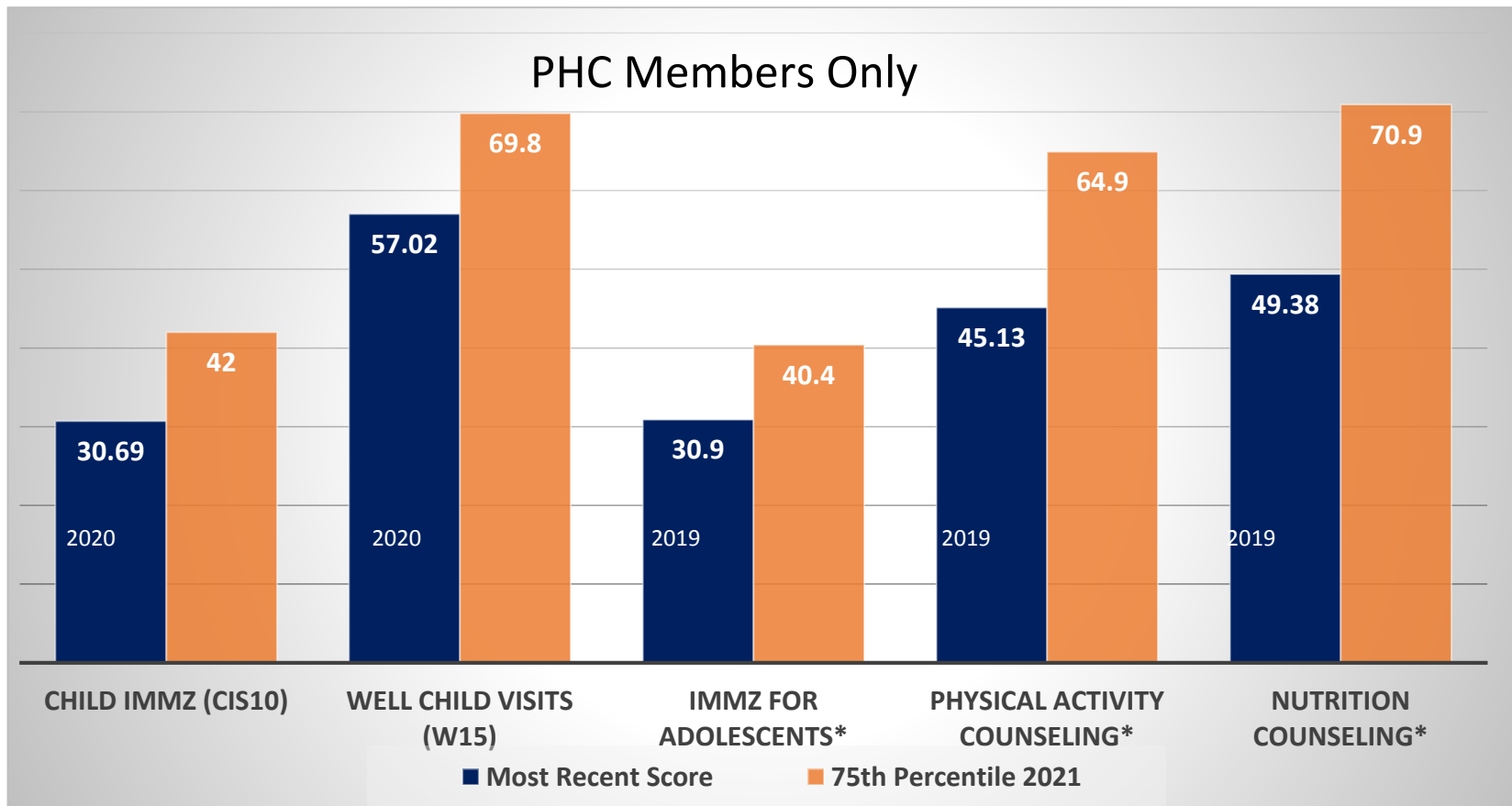


Mendocino County QIP Outcomes

Most Recent QIP Scores Vs. 2021 Benchmark

LS

How close are the County 2019 and 2020 QIP Scores from the 2021 Benchmark?



Data Source: 2020 Partnership HealthPlan QIP

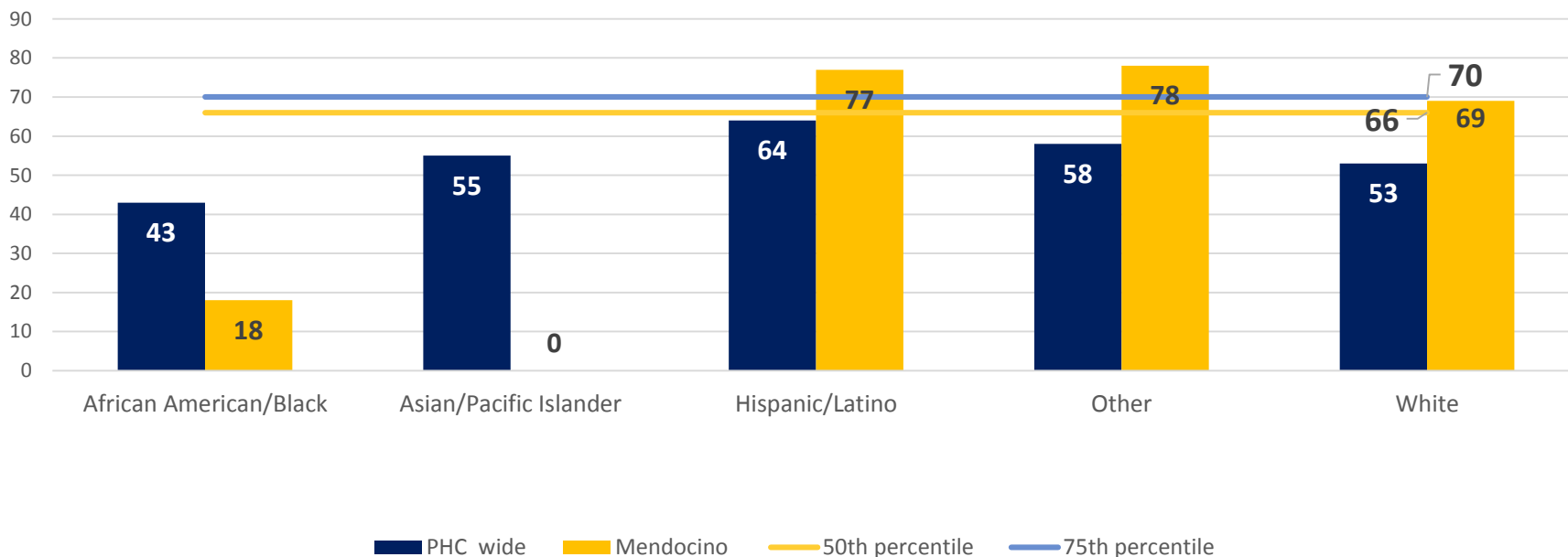
Mendocino County QIP Outcomes

Well Child Visits in First 15 months of Life by Ethnicity



Disparities can begin at an early age. What are the trends in your county that require attention?

At least 6 well-child visits in first 15 months of life



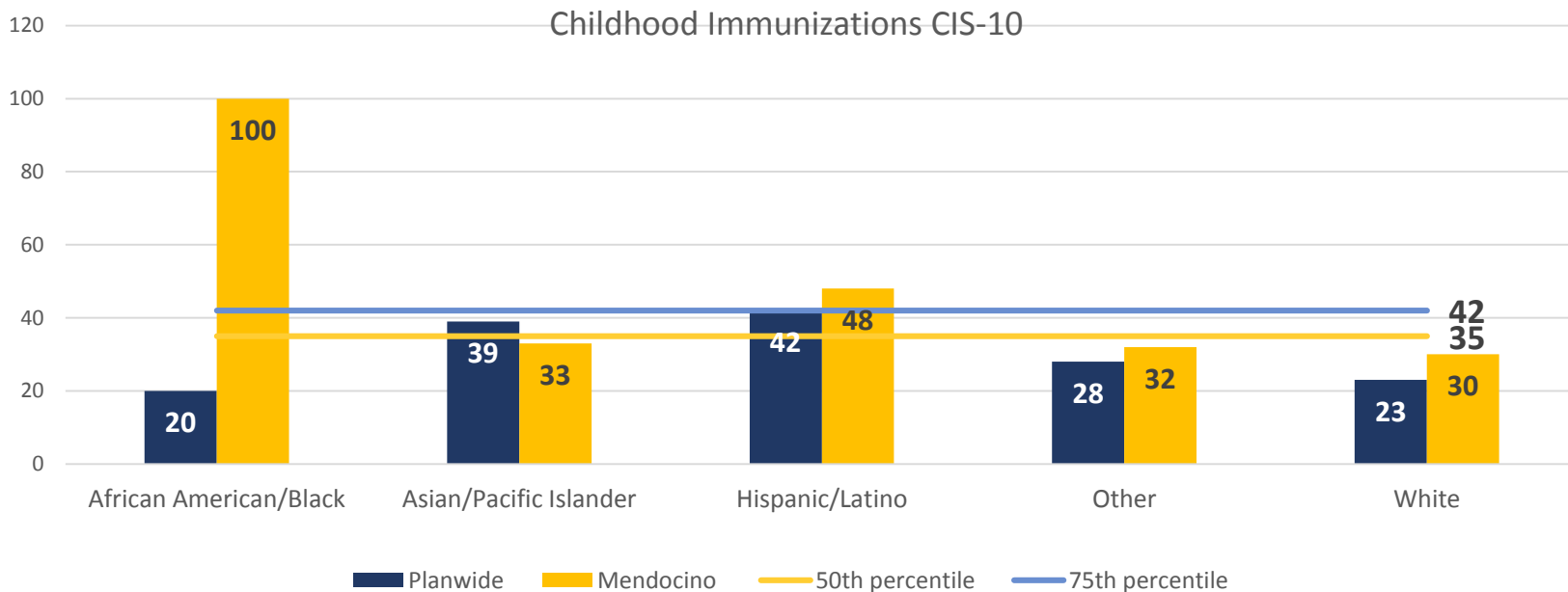
Data Source: 2020 Partnership HealthPlan QIP

Mendocino County QIP Outcomes

Childhood Immunizations by Ethnicity



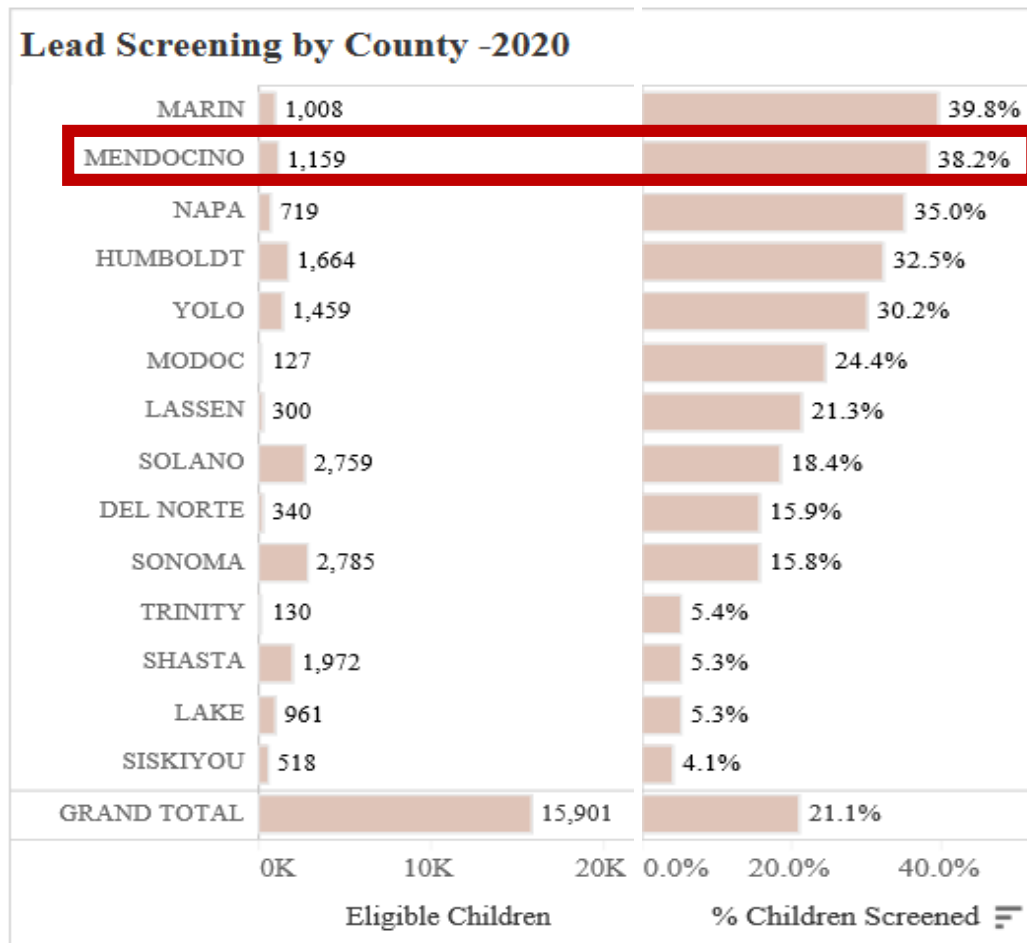
How can this information influence the way you outreach to families with young children?



Data Source: 2020 Partnership HealthPlan QIP

Mendocino County Blood Lead Screening 2020

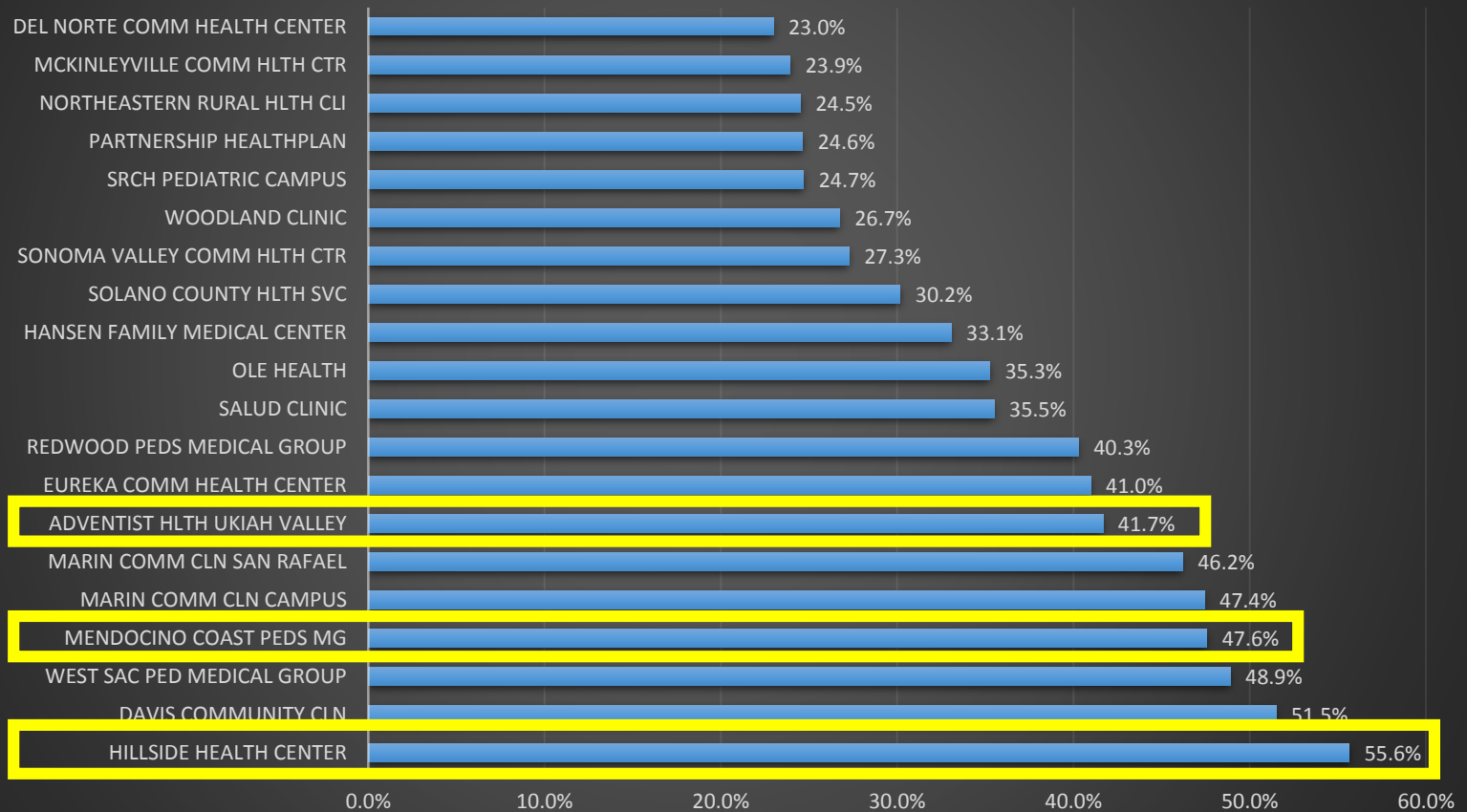
Screening is now a State requirement for all children age 2 and under



Data Source: 2020 Partnership Lab Claims

Mendocino County Blood Lead Screening 2020

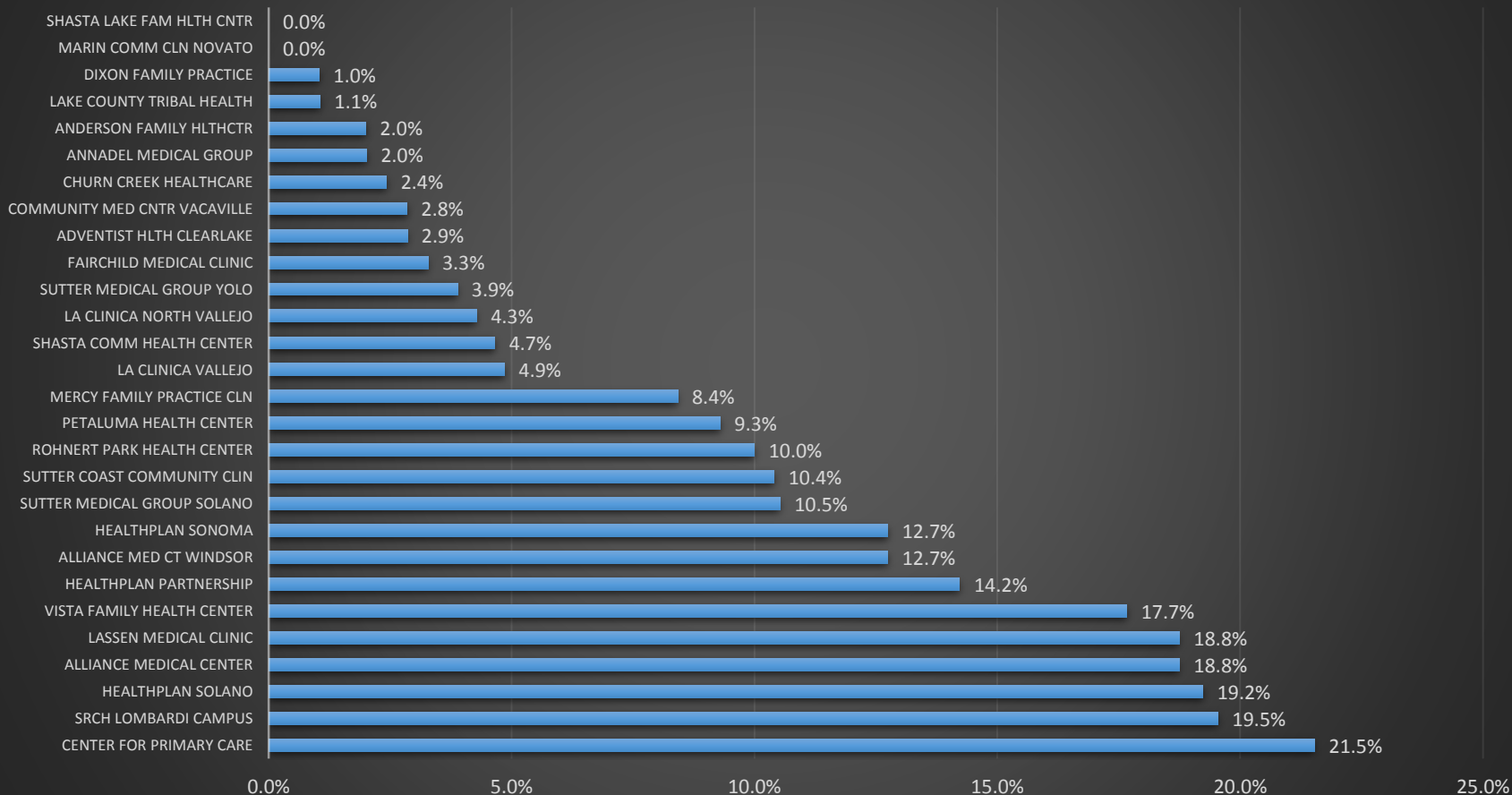
Top 20 Sites: Percent Children Screened for Lead in 2020



Data Source: 2020 Partnership Lab Claims

Mendocino County Blood Lead Screening 2020

Sites 21- 50: Percent of Children Screened in 2020



Data Source: 2020 Partnership Lab Claims

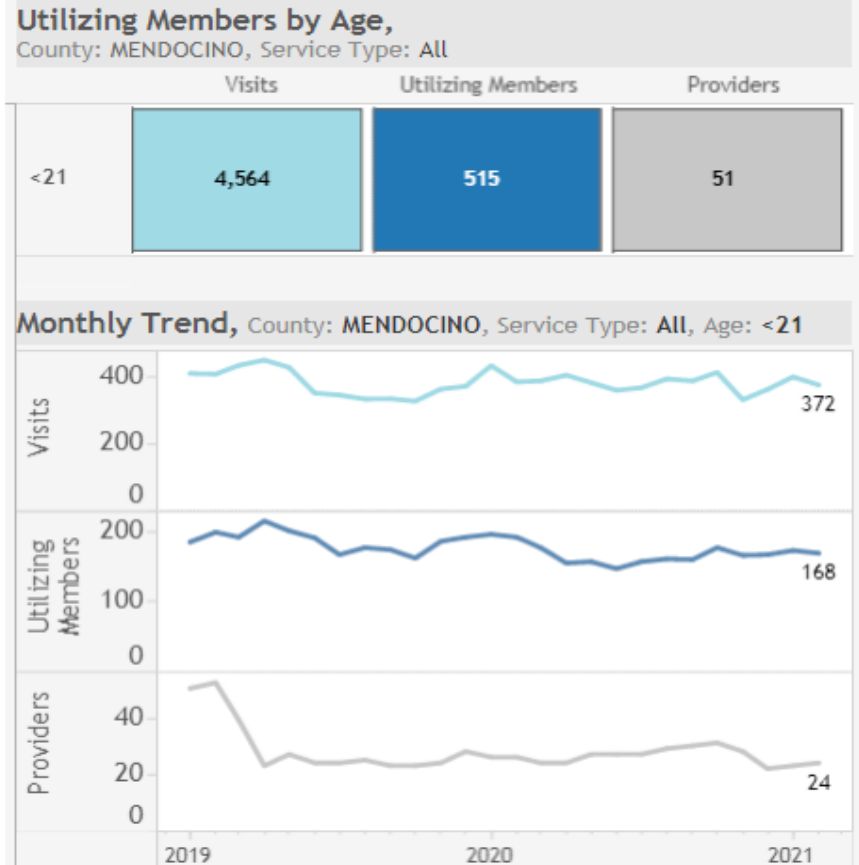


Highlights:

- 15,282 youth under age 21
- 4,564 visits in 2020 (stable)
- Ave of 8.8 visits per user (Plan Ave 10.4)
- 3.3% of youth accessing services (Plan Ave 5.3%)

Data Source: 2020 Partnership HealthPlan Beacon Claims

What are behavioral health use trends in Mendocino County for youth under age 21?





Mendocino County Developmental Screening

MK

Prop. 56 provides enhanced funding for all providers including: FQHCs, RHCs and Indian Health Services (outside of prospective payment).

Developmental screening

- CPT – 96110, with modifier for autism screening
- Three screens per child (9, 18 & 30 Months of age)
- An approved screening tool per AAP and CMS must be used to qualify for Prop 56 payment. MCHAT use unacceptable.
- Can be non-provider screening
- When performed with E/M code a 25 modifier should be used with the E/M code OR a 59 modifier to the 96110.
- \$59.90 per screening

Standardized Screening/Testing Coding Fact Sheet for Primary Care Pediatricians: Developmental/Emotional/Behavioral – AAP & Prop 56 (Tobacco Tax) Incentive Programs – Detailed Summary References:
<https://www.dhcs.ca.gov/provgovpart/Documents/Trauma-Screenings-Policy-10.3.pdf>
<https://www.dhcs.ca.gov/provgovpart/Documents/Developmental-Screenings-Policy>
http://www.partnershiphp.org/Providers/Medi-Cal/Documents/OnDemandTrainingWebinars/Flyers%20and%20Bulletins/Prop%2056%20ACEs%20and%20Developmental%20Screening%20Reimbursement_COVID19%20UPDATE_FINAL.pdf

County	Screenings in 2020
Del Norte	11
Humboldt	48
Lassen	6
Lake	5
Marin	268
Mendocino	98
Napa	5
Shasta	25
Siskiyou	3
Sonoma	736
Solano	158
Yolo	368
Total	1731

Data Source: 2020 Partnership HealthPlan Claims



Mendocino County ACEs Screening

MK

Prop. 56 provides enhanced funding for all providers including: FQHCs, RHCs and Indian Health Services (outside of prospective payment).

ACEs

- CPT G9919 – positive (4+) and recommended f/u and G9920 – negative screen
- Children: PEARLS (age appropriate version)
 - Frequency as appropriate but not more than once per year per provider, per MCP
- Adults up to age 65 – ACEs Screening tool
 - Once in lifetime per provider
 - Excludes dually eligible
- Must complete online training
- \$29 each

County	Screenings in 2020
Del Norte	-
Humboldt	45
Lassen	-
Lake	2
Marin	463
Mendocino	879
Napa	2
Shasta	21
Siskiyou	12
Sonoma	1348
Solano	11
Yolo	956
Total	3739 (0.7% of Eligible)

Data Source: 2020 Partnership HealthPlan Claims



Summary of Social/Economic Barriers

LS

SOUTHERN REGION	Lake	Marin	Mendo	Napa	Solano	Sonoma	Yolo
County Health Ranking (58 Counties)	57	1	41	5	23	8	10
Median Household Income (\$84,100)	\$46,900	\$112,100	\$52,300	\$90,200	\$85,700	\$87,100	\$71,000
Children Living in Poverty (16%)	25%	7%	20%	8%	11%	8%	13%
Children Living in Single Parent Home (23%)	25%	18%	28%	21%	26%	20%	20%
Children Not food insecure (85%)	77%	92%	81%	90%	86%	88%	86%
3rd graders near reading standards (72%)	58%	82%	64%	72%	69%	73%	73%
5th graders met/exceeded science standards (32%)	21%	48%	24%	29%	27%	32%	35%
High School completion rate (89%)	86%	93%	87%	86%	88%	89%	87%
Reported feeling school connection (55%)	50%	64%	45%	60%	49%	55%	54%
Reported perceiving school as safe (55%)	51%	66%	56%	62%	47%	55%	60%
Teen Birth Rates (17/1000)	32	6	24	12	16	11	8
Reported not feeling suicidal (81%)	79%	86%	81%	84%	81%	81%	86%
Exclusively breastfed in hospital (70%)	66%	89%	72%	87%	81%	82%	85%
Women receiving timely prenatal care (84%)	73%	85%	70%	90%	82%	88%	84%
Meeting 4 of 6 fitness standards (70%)	62%	85%	58%	72%	63%	66%	73%
13 year olds vaccinated for HPV virus (28%)	13%	33%	21%	39%	34%	38%	28%
Not low birthweight (93%)	93%	95%	95%	93%	93%	94%	95%
Children on Medi-cal with annual preventative exam (41%)	39%	46%	48%	47%	40%	43%	46%
Kindergarteners up-to-date on immunizations (95%)	92%	94%	85%	95%	98%	91%	96%
HS grads that enrolled in College (64%)	43%	76%	33%	67%	60%	63%	65%
Juvenile arrest rate per 1,000 (4.1) s=<2 arrests	3.80	3.80	9.80	3.70	4.80	4.20	3.80
Social and Economic Metrics Below State Average	18	1	15	2	11	4	3

Data Source: ChildrenNow & RWJ County Health Ranking



Summary of Social/Economic Barriers

NORTHERN REGION	Del Norte	Humboldt	Lassen	Modoc	Shasta	Siskiyou	Trinity
County Health Ranking (58 Counties)	50	45	48	55	49	56	58
Median Household Income (\$84,100)	\$49,000	\$51,100	\$53,600	\$45,300	\$61,500	\$46,000	\$43,900
Children Living in Poverty (16%)	26%	21%	15%	31%	17%	26%	25%
Children Living in Single Parent Home (23%)	30%	25%	25%	32%	22%	22%	40%
Children Not food insecure (85%)	75%	80%	80%	76%	78%	75%	74%
3rd graders near reading standards (72%)	60%	70%	62%	61%	75%	66%	75%
5th graders met/exceeded science standards (32%)	24%	31%	29%	18%	32%	27%	41%
High School completion rate (89%)	80%	90%	83%	85%	91%	90%	92%
Reported feeling school connection (55%)	42%	57%	50%	53%	58%	54%	52%
Reported perceiving school as safe (55%)	38%	57%	47%	63%	58%	53%	51%
Teen Birth Rates (17/1000)	38	15	25	23	22	23	25
Reported not feeling suicidal (81%)	80%	82%	72%	75%	79%	77%	81%
Exclusively breastfed in hospital (70%)	75%	82%	77%	45%	37%	76%	52%
Women receiving timely prenatal care (84%)	73%	78%	74%	54%	74%	76%	63%
Meeting 4 of 6 fitness standards (70%)	73%	68%	65%	80%	74%	72%	74%
13 year olds vaccinated for HPV virus (28%)	20%	20%	9%	9%	12%	13%	13%
Not low birthweight (93%)	95%	94%	92%	90%	94%	92%	88%
Children on Medi-cal with annual preventative exam (41%)	42%	40%	29%	40%	35%	45%	41%
Kindergarteners up-to-date on immunizations (95%)	94%	88%	94%	99%	88%	89%	91%
HS grads that enrolled in College (64%)	42%	53%	65%	51%	61%	62%	50%
Juvenile arrest rate per 1,000 (4.1)	5	2.90	10.40	5	3.30	5	5
Social and Economic Metrics Below State Average	14	12	18	16	11	14	13

Data Source: ChildrenNow & RWJ County Health Ranking



Appendix: Data Source Detail

Metric	Source & Date Range
Median household income	RWJ County Health Ranking (2019)
Children living in poverty	RWJ County Health Ranking (2019)
Children living in single parent household	RWJ County Health Ranking (2015-2019)
Children who were not food insecure	ChildrenNow (2018)
Third graders near or above stds	ChildrenNow (2019)
5th graders at or above science standards	ChildrenNow (2019)
High School completion rate	RWJ County Health Ranking (2015-2019)
Reported feeling school connection	ChildrenNow (2019)
Reported perceiving school as safe	ChildrenNow (2019)
Teen Birth Rates	RWJ County Health Ranking (2013-2019)

Metric	Source & Date Range
Reported not feeling suicidal	ChildrenNow (2019)
Exclusively breastfed in hospital	ChildrenNow (2018)
Women receiving timely prenatal care	ChildrenNow (2018)
Meeting 4 of 6 fitness standards	ChildrenNow (2019)
13 year olds vaccinated for HPV virus	ChildrenNow (2018)
Not low birthweight	ChildrenNow (2018)
Children on Medi-cal with annual preventative exam	ChildrenNow (2018)
Kindergarteners up-to-date on immunizations	ChildrenNow (2019)
HS grads that enrolled in College	ChildrenNow (2018)
Juvenile arrest rate per 1,000	KidsData.org (2018)

For questions about the data contained in this report, please contact Lynn Scuri lscuri@partnershiphp.org or Sheila Hakel at shakel@partnershiphp.org